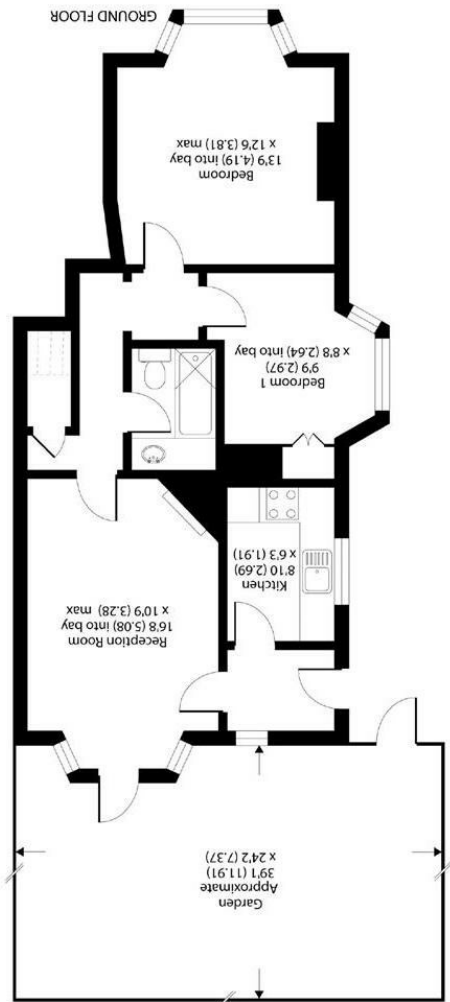
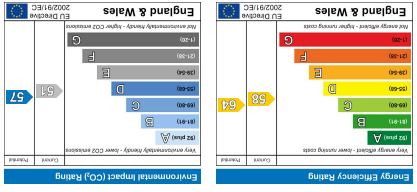


All appliances listed in these details are only 'as seen' and have not been tested by Gibson Lane, nor have we sought certification of warranty or service, unless otherwise stated. Measurements, areas and distances are approximate. Floor plans and photographs are for guidance purposes only and must not be relied upon for any purpose. These details are offered on the understanding that all negotiations are made through this company. Neither these particulars, nor verbal representations, form part of any offer or contract, and their accuracy cannot be guaranteed.



APPROX. GROSS INTERNAL FLOOR AREA 636 SQ FT 59.1 SQ METRES  
 (EXCLUDES RESTRICTED HEAD HEIGHT)

34 Richmond Road  
 Kingston upon Thames  
 Surrey  
 KT2 5ED  
 www.gibsonlane.co.uk  
 Tel: 020 8546 5444



Fairfield South  
 Kingston upon Thames KT1 2UL



## Fairfield South

Kingston Upon Thames KT1 2UL

Asking Price £470,000

An attractive two bedroom Edwardian garden flat situated opposite the open spaces of Fairfield Green.

### Description

An immaculately presented two bedroom ground floor conversion flat situated in this sought after location moments from Fairfield green. The property has been subject to some extensive modernisation with accommodation comprising of entrance hall, modern fully fitted kitchen, front reception room with patio doors leading directly onto a private south facing rear garden. Master bedroom, second bedroom and modern bathroom. The property also has the added bonus of having share of freehold.

### Situation

Fairfield South is a sought after road situated directly opposite the pleasant open spaces of Fairfield Green. The property is ideally located for Kingston town centre with its array of shops, bars, restaurants and Kingston station which offers a frequent service directly into Waterloo.

**Tenure:** Leasehold - Share of Freehold  
**Local Authority:** Kingston upon Thames

